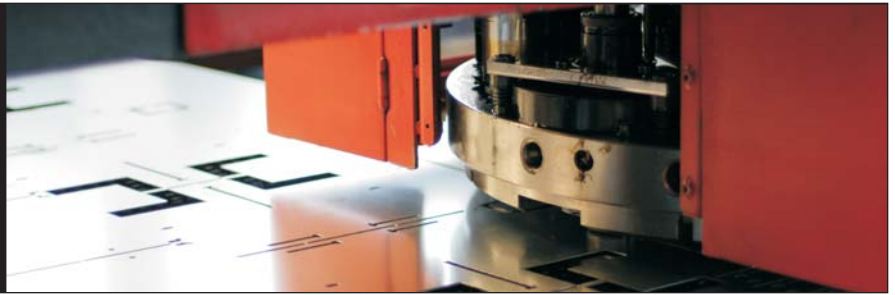


STRIKER™

2010



STRIKER 2010 is a comprehensive family of software products designed to automate the sheet metal nesting and CNC programming process. Whether you operate in a production environment, a job shop, or somewhere in between, STRIKER 2010 provides the absolute latest in sheet metal fabrication software technology. Our modular approach makes STRIKER 2010 fully scalable, allowing it to expand with the increasing fabrication demands of your organization. This document provides a brief overview of the software modules available in the STRIKER 2010 family. For a more detailed look, we invite you to visit our web site or contact a Striker Systems sales professional to arrange a software presentation specific to the needs of your organization.



SS-Punch™

CNC Punch Press Programming

SS-Punch provides total control over your punching process, from fully automatic to completely interactive. SS-Punch's unique CAD/CAM environment delivers unprecedented flexibility. A few of SS-Punch's features include:

- Auto & Interactive Punching
- CNC Machine Drivers Available for Virtually all Punching Machines
- Geometric Pattern Recognition
- Auto Special Tool Punching
- Cluster Tool Support
- Auto Micro-Joint (Tab) Placement
- Adaptable Turret Configuration
- Save Multiple Turret Loads
- Auto Tool Sequencing
- Tool-Path Optimization
- Auto Reposition Support
- Auto Work Clamp Placement
- Programmable Work Clamp Support
- Flip / Rotate Oversize Sheets
- Tool Load Optimization
- Drop Door Support
- Cross Posting
- Tool-Path Simulation
- Optional Wheel Tool Support
- Add SS-Profile for Punch / Plasma and Laser Support

SS-Profile™

Programming for CNC Sheet & Plate Cutting



SS-Profile provides automatic and interactive programming for CNC laser, plasma, oxy-fuel, waterjet, and other two-axis cutting machines. SS-Profile includes the following features:

- Auto & Interactive Tool-Path Assignment
- CNC Machine Drivers Available for Virtually all Cutting Machines
- Material Based Cutting Parameters
- Material Based Leads
- Multiple Process Support (i.e. Cutting, Etching, etc)
- Automatic and Interactive Lead Placement
- Quickly Modify Cutting Parameters
- Auto Tab Placement
- Drop Door Support
- Bridge Cutting
- Chain Cutting
- Common Edge Cutting
- Optimum Corner Processing
- Cut Sequence Optimization
- Subroutine / Macro Support
- Head Down Processing w/ Collision Avoidance
- Auto Skeleton Destruction
- Tool-Path Viewing / Simulation
- Work Clamp and Reposition Support (on applicable machines)





SS-Nest™

Automatic Multiple Part Nesting

SS-Nest provides automatic multiple part nesting for your production or job shop environment. When bundled with SS-Punch and/or SS-Profile, SS-Nest delivers exceptional material utilization and CNC machine throughput. A few of SS-Nest's features include:

- True Shape & Rectangular Nesting
- Effortless "Nest Wizard" Interface
- Part Library w/ Advanced Search
- Part In Part Nesting
- Filler Part Support
- Work In Process Tracking
- Auto Best Sheet Selection
- Extended Calculation Algorithms
- Part and Assembly Nesting
- Batch Processing of DXF and DWG Files
- Auto Sort on Material Type & Thickness
- Part Cluster Support
- Part Prioritizing
- Irregular Remnant Nesting
- Auto NC Program Creation

SS-Nest also offers the following optional extended functionality...

Manufacturing System Extension - Allows SS-Nest to accept production data from external manufacturing software such as MRP and ERP systems.

Multiple Torch Extension - Extends the functionality of SS-Nest to optimize the use of multiple torches for CNC machines with multiple torch configurations.

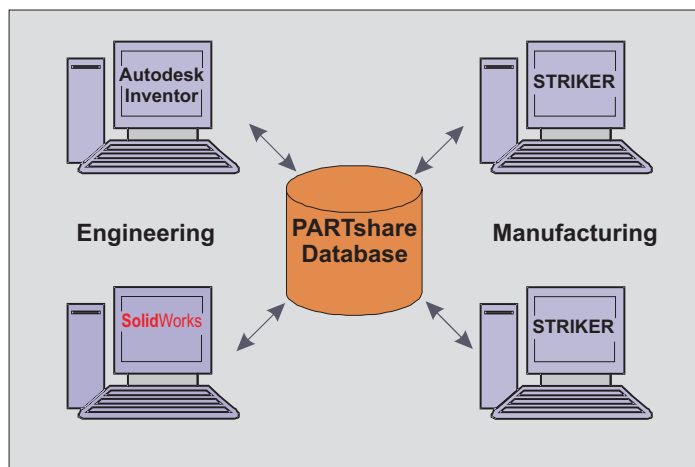
Shear Extension - Provides an additional SS-Nest algorithm specifically for guillotine shear operations. Optimizes rectangular blank shearing, providing shear cut locations and cut order.

PARTshare™

Real-Time Solid Modeling Interface



PARTshare is a unique networked library system that allows the STRIKER 2010 software modules to seamlessly share part data with popular solid modeling systems. Available for Autodesk® Inventor™ and SolidWorks®, the PARTshare interface plugs directly into the SolidWorks or Autodesk Inventor menu system allowing the solid modeling engineers to effortlessly deliver part data to manufacturing. Supporting both single part and complete assembly extraction, PARTshare provides the versatility to support the broadest range of production operations.



Multi-User PARTshare Configuration

Parts placed into the PARTshare library can be accessed by any of the STRIKER 2010 software modules. Parts can be retrieved individually for CNC processing, and SS-Nest also relies on the PARTshare library for nest job construction. This means parts placed into PARTshare from engineering are immediately available for nesting operations.

Autodesk
Authorized Developer

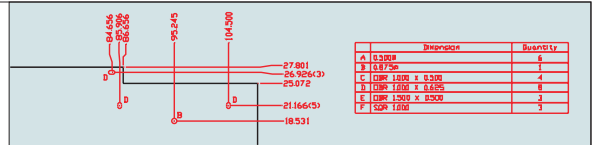


Autodesk® Inventor™
2010
Certified

Autodesk

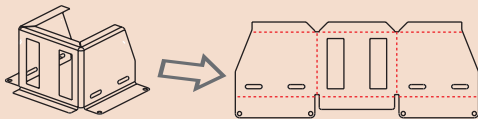
SS-Design™

Comprehensive Sheet Metal CAD Interface



SS-Design is included with the purchase of all other STRIKER 2010 CAD/CAM modules. It is the standard interface across all products and is the heart of our truly integrated CAD/CAM system. Based on the AutoCAD OEM Engine, you can be confident knowing that your design and manufacturing data is saved in the world's most popular CAD format.

- Advanced Sheet Metal Design Components
- Parametric Feature Definition
- Parametric Feature Modification
- Industry Standard DWG and DXF Native File Format
- OLE Interface for Inventor, SolidWorks, and Solid Edge
- Automatic Dimensioning System
- Extensive Dimension Commands
- Drawing Integrity Verification
- Automatic Geometry "Cleaning"
- Integrated Drawing Border System
- Comprehensive Text System
- User Library
- 2-D & 3-D Design Capability
- Bill of Materials Commands
- Advanced Layer Control
- Enhanced Viewing System
- Automatic Spline Detection and Conversion
- Standard Interface for all STRIKER 2010 Modules



SS-Unfold™

2-D & 3-D Unfolding System

SS-Unfold is an advanced 3-D and 2-D unfolding system for wireframe part models. Its extensive feature set allows you to effortlessly create accurate flat parts in seconds.

- 3-D & 2-D Wireframe Unfolding
- User Defined Bend Calculations
- Incorporates Historical Bend Data
- User Materials Library
- Spring-Back Calculator
- 3-D Folding
- Complex Corner Joint Development
- Auto Bend Chart Creation
- Bend Calculation Override
- 2-D Progressive Unfolding
- Bend Design Features
- Part Integrity Verification
- Share Bend Data w/ Other STRIKER 2010 Applications

SS-DNC™

CNC Machine Communications



Once STRIKER 2010 generates an NC program, it must be transferred from the computer to the CNC machine. Many newer CNC controllers can be networked, and do not require additional software to support this file transfer. Others require communications software, often referred to as DNC software. The acronym "DNC" stands for Distributed Numerical Control, where NC programs are passed from a computer to one or more CNC Machines.

SS-DNC is a comprehensive DNC communications software providing both upload and download capability between your PC and CNC machine(s). SS-DNC includes the following features:

- Offers Automatic Remote Request as well as Interactive Send / Read configurations.
- Supports up to 256 CNC machines from a single SS-DNC installation.
- Supports a variety of multi-port hardware devices.
- NC Programs can be viewed and edited directly from the SS-DNC dialog.
- User-friendly Windows interface makes SS-DNC easy to configure and easy to use.

Now Available! Striker Systems has taken SS-DNC one step further. DNC2go now allows you to access and transfer your NC programs through a Pocket PC device! Contact a Striker Systems Sales Team member for additional information.

The following system requirements should be adhered to for STRIKER 2010:

- Intel® Pentium® 4 processor or AMD Athlon® dual-core processor, 1.6 GHz or higher with SSE2 technology (3.0Ghz for Windows Vista®)
- Microsoft® Windows Vista® (SP1 or later) Windows® XP Professional or Home edition (SP2 or later) operating systems
- 2 GB RAM
- 500 MB free disk space for installation (estimate - varies with products installed)
- 1024x768 VGA with True Color (1280x1024 recommended)
- Microsoft® Internet Explorer® 7.0
- Install from DVD

Additional requirements for 64-bit systems:

- AMD Athlon 64 with SSE2 technology, or AMD Opteron® processor with SSE2 technology or Intel® Xeon® processor with Intel EM64T support and SSE2 technology, or Intel Pentium 4 with Intel EM64T support and SSE2 technology
- Windows XP Professional x64 edition (SP2 or later) or Windows Vista (SP1 or later) including Enterprise, Business, Ultimate or Home Premium Edition

About Striker Systems

For more than twenty years, Striker Systems has focused on providing integrated manufacturing solutions for the sheet metal fabrication industry. Our mission is to deliver our clients the most productive software technology for sheet metal fabrication through innovative industry research, excellence in product development, and a customer support system second to none.

A private corporation headquartered in White House, Tennessee, Striker Systems has shown extraordinary stability in an often tumultuous market. As many in our industry have come and gone, Striker Systems has remained a consistent leader. Our management team is devoted to the long term success of Striker Systems for our customers, our employees, and our community.

Although Striker Systems maintains a global presence, our management, product development, and customer service teams are located at our Tennessee headquarters. This allows us to respond quickly to continually evolving technology and gives our customers confidence - knowing that our service department is directly supported by the architects of our products.

We appreciate you considering Striker Systems for your sheet metal fabrication software needs. Striker Systems operates through a direct sales team as well as a network of key distributors. It is our sincere desire to provide the necessary information for you to make an informed, confident decision as you consider our products and services. If you have additional questions or if you would like to arrange a STRIKER 2010 demonstration specific to the needs of your organization, please don't hesitate to call a Striker Systems Sales Team member today.



Div. of Computer Design, Inc.
P.O. Box 41
White House, TN 37188

For additional information on STRIKER 2010 or to arrange a custom online demonstration, contact a Striker Systems Sales Team member at

800.950.7862

Email: sales@strikersystems.com

Web: www.StrikerSystems.com

Powered by
Autodesk
Technology

Autodesk