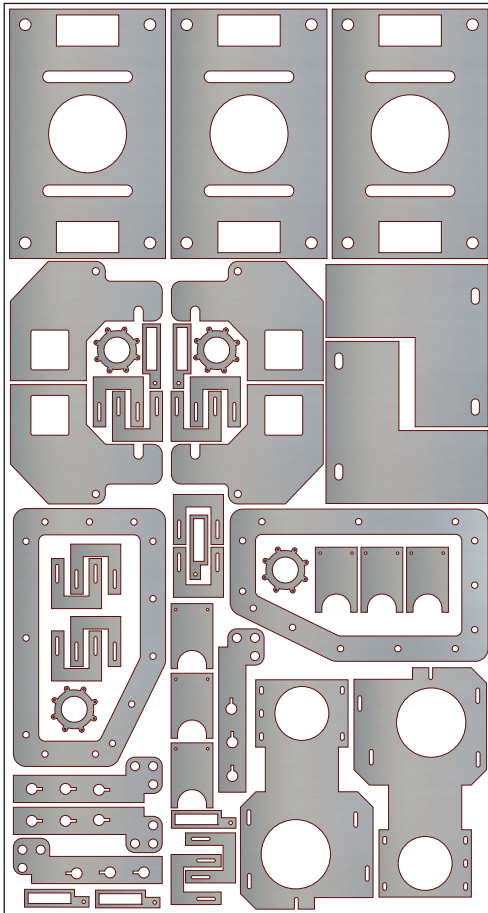


PARTshare® for SolidWorks®

Real-time solution for sharing SolidWorks sheet metal assembly and part information for nesting and programming your CNC punch presses and two-axis cutting machines (laser, plasma, waterjet, etc.).



THE PARTSHARE ADVANTAGE

PARTshare is a comprehensive library system that provides storage and retrieval of SolidWorks sheet metal assemblies and parts along with associated manufacturing information.

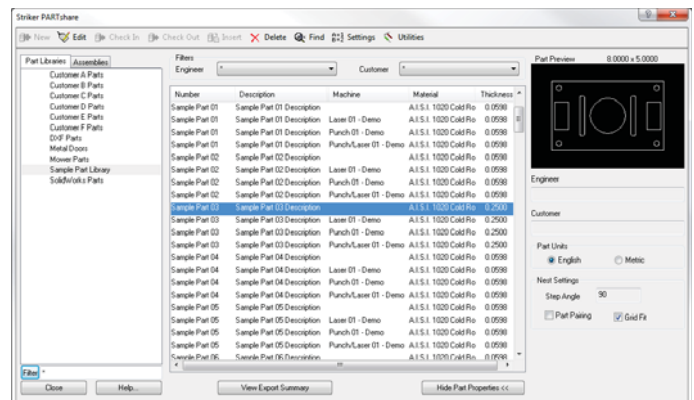
- Real-Time Data Sharing** - The PARTshare add-in for SolidWorks can be loaded on every SolidWorks license that needs to release sheet metal parts for manufacturing. Each SolidWorks license (via PARTshare) is mapped to a shared part library, so as SolidWorks assemblies and parts are released they are instantly available for downstream manufacturing operations.
- Improve Productivity** - Unfolding and saving flat sheet metal parts from SolidWorks can be a time consuming and tedious operation, particularly with large assemblies. PARTshare automates this task and processes even the largest assemblies with a single command selection. All sheet metal models are automatically unfolded as they are released eliminating the need to open and unfold individual parts. The standard SolidWorks bend tables are used for unfolding guaranteeing consistency in your manufacturing process.
- Nesting & CNC Processing** - The STRIKER CAD/CAM software links to the PARTshare library with SolidWorks. STRIKER CAD/CAM can be installed on the same computer as SolidWorks or on a completely separate computer, perhaps on the shop floor. Immediately upon release from SolidWorks, parts and complete assemblies can be nested and programmed for your CNC turret punch presses and two-axis cutting machines (laser, plasma, waterjet, etc.).
- Interface With Non-STRIKER Applications** - Perhaps you need to make flat sheet metal parts available for manufacturing operations not related to STRIKER CAD/CAM software. Along with each flat DXF file, PARTshare creates an XML data file containing all of the assembly and part information that can be imported by other manufacturing applications.

SHEET METAL PART PROCESSING

Part Information - Detailed part information such as part number, description, revision level, material properties, and even routing information can be extracted from standard or custom SolidWorks properties. This information is used in subsequent nesting and CNC programming operations.

Part Orientation - The orientation of parts in sheet metal manufacturing is often critical. An incorrect part rotation angle or processing side can stall production. PARTshare delivers full control over flat part orientation, providing rules for automatic determination and/or designer approval.

Full Support of SolidWorks Features - PARTshare fully supports SolidWorks features such as multibody parts and sheet metal models with multiple configurations. Available modes for multiple configurations include automatic extraction of the active configuration or prompting for the desired configuration(s).



PARTshare interface accessed from SolidWorks menu

SHEET METAL ASSEMBLY PROCESSING

PARTshare for SolidWorks delivers tremendous time savings through the automatic extraction of entire assemblies.

Assembly Part Review - As SolidWorks assemblies are extracted, a list of all sub-assemblies and assembly parts is displayed to the SolidWorks designer. Parts with possible extraction issues, such as missing or invalid material information, are highlighted for quick identification allowing potential problems to be addressed before they reach manufacturing.

Part Extraction Control - If desired all sheet metal parts in the assembly can be placed into the PARTshare library. But there may be times that parts need to be excluded from the extracted assembly, such as with purchased items. The SolidWorks designer has full control over which parts are saved with the assembly, or it can be automatically determined by a SolidWorks custom property.

Assembly Information - Once extracted, the assembly definitions (and sub-assembly definitions if desired) are maintained in the PARTshare library. The assembly part number, revision level, and description are available to facilitate manufacturing operations.

Nesting & CNC Processing - The STRIKER CAD/CAM software can process the assembly parts individually, or the entire assembly can be nested with a desired quantity. For additional automation, the Striker Systems *SS-Nest Manufacturing Software Extension* can be implemented to automate nesting via output from MRP, ERP, and other production scheduling systems.

ABOUT STRIKER SYSTEMS

For more than twenty five years, Striker Systems has focused on providing integrated manufacturing solutions for the sheet metal fabrication industry. Our mission is to deliver our clients the most productive software technology for sheet metal fabrication through innovative industry research, excellence in product development, and a customer support system second to none.

A private corporation headquartered in White House, Tennessee, Striker Systems has shown extraordinary stability in an often tumultuous market. As many in our industry have come and gone, Striker Systems has remained a consistent leader. Our management team is devoted to the long term success of Striker Systems for our customers, our employees, and our community.

Although Striker Systems maintains a global presence, our management, product development, and customer service teams are located at our Tennessee headquarters. This allows us to respond quickly to continually evolving technology and gives our customers confidence - knowing that our service department is directly supported by the architects of our products.

We appreciate you considering Striker Systems for your sheet metal fabrication software needs. Striker Systems operates through a direct sales team as well as a network of key distributors. It is our sincere desire to provide the necessary information for you to make an informed, confident decision as you consider our products and services. If you have additional questions or if you would like to arrange a demonstration of PARTshare or any of the Striker Systems sheet metal CAD/CAM and nesting products, please don't hesitate to call a Striker Systems Sales Team member today.

STRIKER SYSTEMS®

Division of Computer Design, Inc.
P.O. Box 41 • 104 S.C.T. Drive
White House, TN 37188 USA

Phone: 1 800 950 7862
Outside the US: +1 615 672 5132
Email: sales@strikersystems.com

www.StrikerSystems.com

